

2018

Annual Report & Residential Recycling Report

Recycling Past & Present

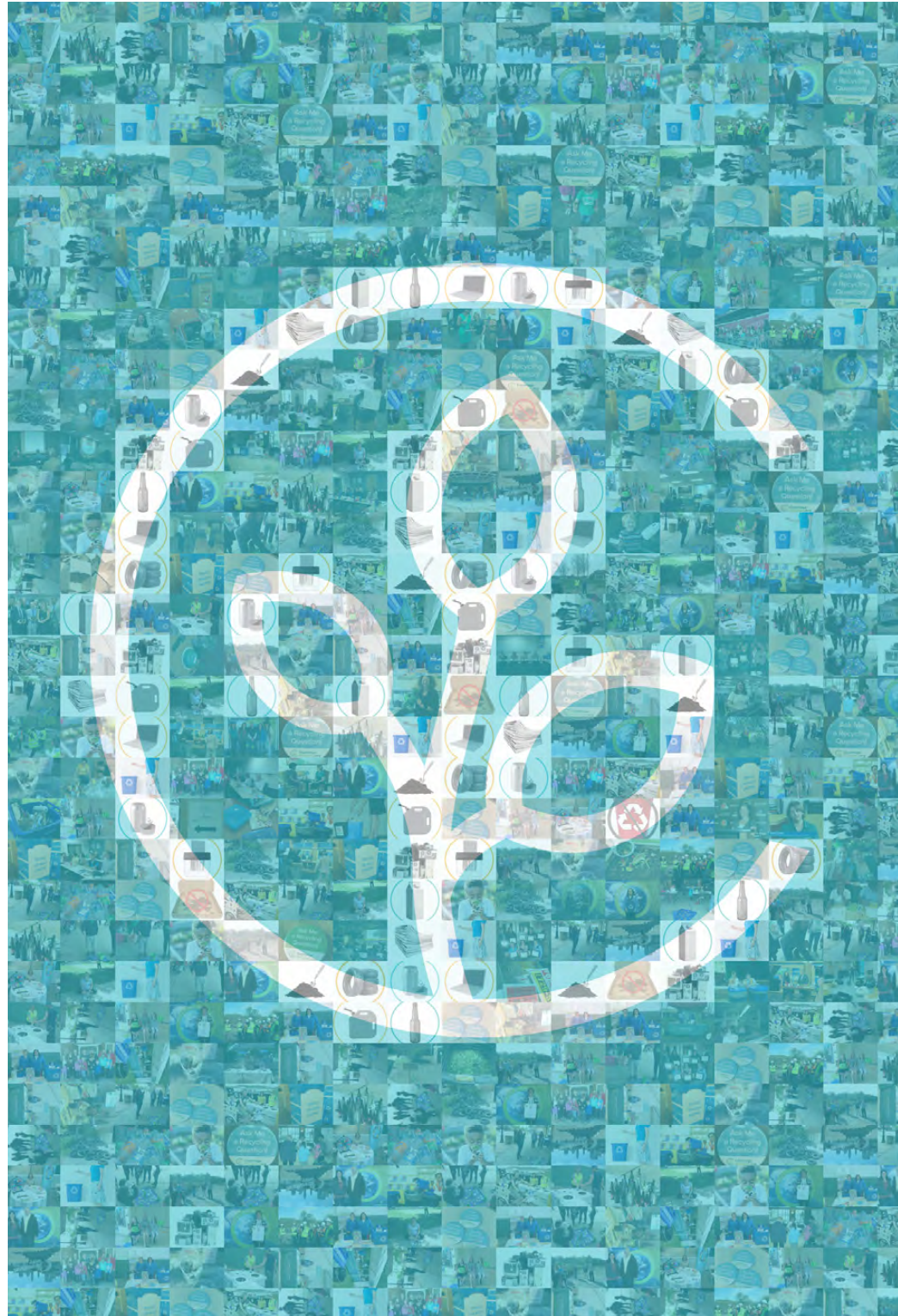
Recycling's roots are deep here in Cuyahoga County because of our industrial and **steel-making heritage**. Collecting scrap metal to feed steel and aluminum mills was an early recycling enterprise that continues to this day. Nowadays, recycling is prominent in our communities and in our commercial businesses. Annually, **we divert more than 1.4 million tons** of waste from landfills through recycling, composting and other waste reduction activities. Every step in the recycling process, from collection and processing to manufacturing and sale of recycled products, creates a chain of economic activity that results in **business development, jobs, tax revenue and economic growth**. Recycling also is critical for **conserving** natural resources, energy and reducing greenhouse gas emissions.

Our recycling system has grown in sophistication and complexity in the 30 years since the Ohio legislature passed its comprehensive solid waste law designed to **reduce reliance on landfills** by increasing recycling. State goals and the public's demand for recycling was the impetus behind the development of the many **curbside recycling programs** in the 1990s. This led to the introduction of automated collection and **single stream recycling** in the 2000s and technology upgrades to the processing facilities that sort our curbside materials in this decade.

While all this was happening on the collection side, **recycling markets also changed**. As manufacturing moved overseas so did the demand for scrap materials used in production. As a nation, **we became reliant on China** to buy the mixed plastic and mixed paper we collected from the curb. This cycle was upended in 2018 when China's National Sword Policy went into effect, restricting their imports of recyclables. Our local recycling processors felt the impact even if they never sold material to China.

Reduced market demand and excess supply has caused commodity prices to fall while curbside material must be sorted

Continued on next page



Cuyahoga County
SOLID WASTE DISTRICT

Recycling Past & Present

Continued from cover page

to cleaner and **cleaner levels** in order to find a market.

What happens next is unclear but the **importance of recycling to the global economy** and manufacturing will not change. Mills still need scrap metal, paper, cardboard, glass and some plastic grades. Collection methods may continue to evolve in order to supply mills with cleaner materials. **Contracting methods are already changing** to accommodate cost sharing.

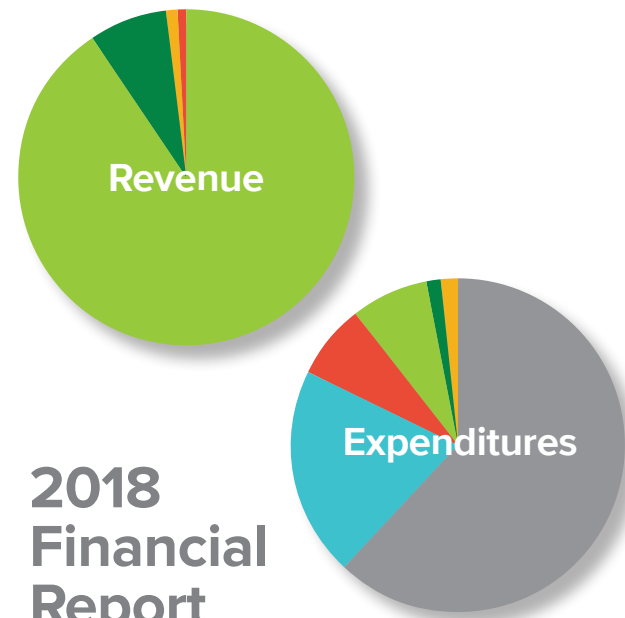
We have weathered downturns in the market before. This one will require waiting for new domestic recycling markets to open. This is beginning to happen as **new recycled paperboard mills come on-line**, including one

here in Ohio that will open at the end of this year.

Today, our focus at the District is to help residents **understand the importance of recycling properly** and reducing waste. Renewed emphasis is being placed on the first two R's – Reduce, Reuse and now Refuse – especially when it comes to single-use, non-recyclable plastic. We are also focused on helping public officials **anticipate and plan** for recycling cost increases. The District has been and will continue to be the **leading resource** for information, expertise and programs that support sustainable materials management in Cuyahoga County and we are here to lead and **support the community** through this transitional period.

	Recycling	Landfill
Then	597,900 tons	2,699,900 tons
Now	1,284,007 tons	1,324,039 tons

2018 marked 30 years since Ohio enacted HB 592 to reduce reliance on landfills and increase waste reduction and recycling. The numbers demonstrate how Cuyahoga County achieved the State's goals.



2018 Financial Report

REVENUE	\$2,192,076
● Generation Fees	\$1,986,059
● Grants	\$164,913
● C&DD Disposal Fees	\$27,661
● Miscellaneous Revenue	\$13,443

EXPENDITURES	\$1,977,829
● Programs & Services	\$845,834
● Salary and Benefits	\$605,241
● Operating	\$220,677
● Health Departments	\$218,342
● County Indirect Costs	\$46,151
● Solid Waste Planning	\$41,584

YEAR END CASH BALANCE \$3,336,662

2018 Cuyahoga County Residential Recycling Report

This chart shows the percentage of each community's waste stream that was recycled and composted in 2018. These add up to the total recycling rate for each community.

Note: Numbers have been rounded. See data table for exact figures.

Key

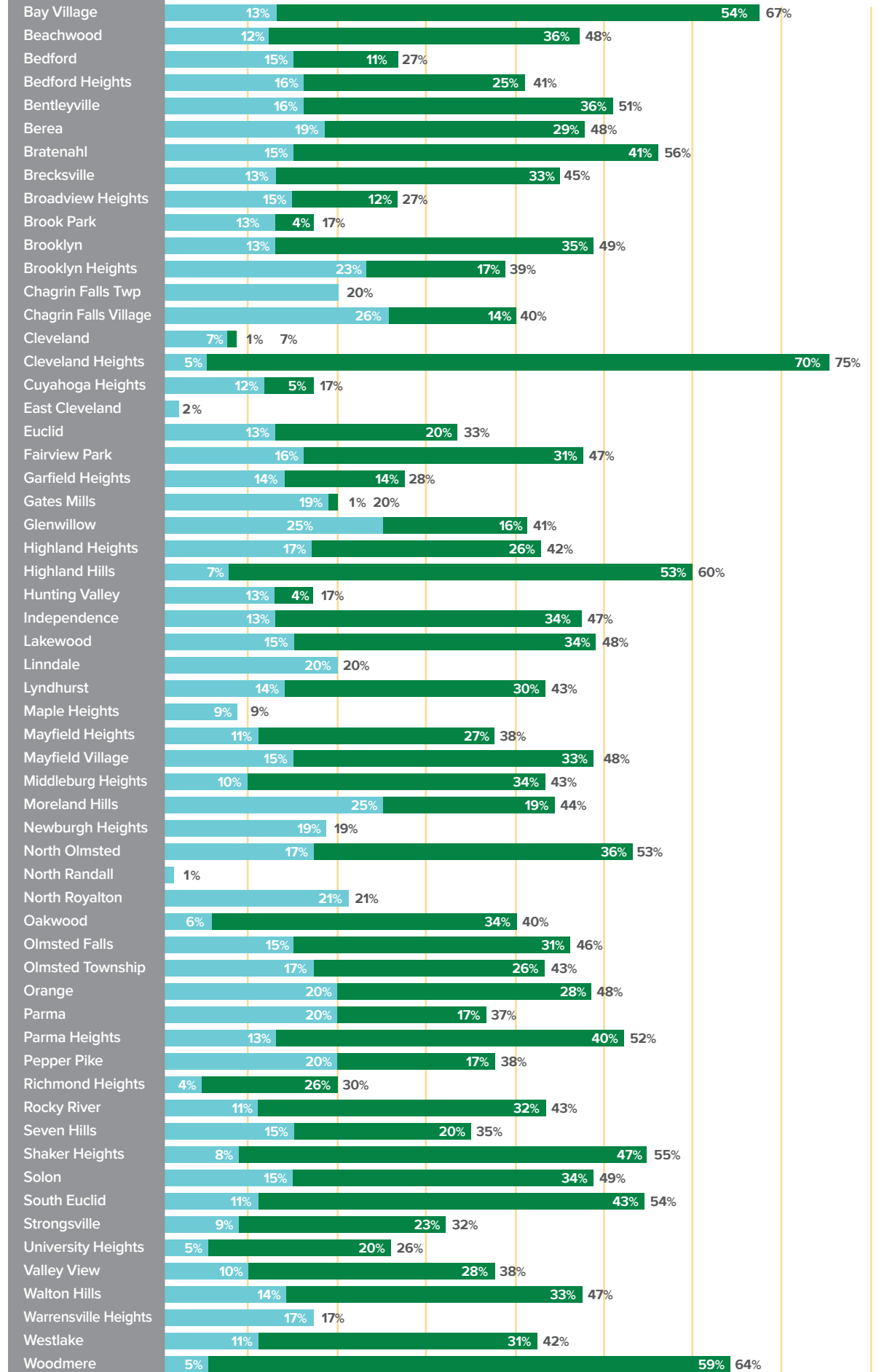
% Recycled

The percentage of the community's total residential waste collected for recycling. Includes cans, cartons, glass, paper and boxes, plastic bottles and jugs, scrap metal, appliances, computers, household hazardous wastes and scrap tires collected through curbside, drop-off and other collection programs.

% Composted

The percentage of a community's total residential waste that was collected for composting or mulching. Includes yard waste leaves, grass, brush and wood waste.

Community



Business

130 workplace recycling seminars conducted for 111 attendees

273 businesses assisted

44 waste audits performed

15 grants awarded to schools and non-profit organizations

Education

2,529 students reached through 88 classroom presentations

1,388 adults reached through 48 recycling presentations

214 homeowners attended a backyard composting seminar

17 adults completed the 2018 Master Recycler course

Outreach

124,145 website visitors

4,900 recycling hotline calls fielded

26,326 brochures distributed

47 community events and booths

3,755 e-newsletter subscribers

Municipal

44 communities received a District grant and 7 communities received contract assistance

256 tons of household hazardous waste managed

18,388 scrap tires and 9,068 bags of litter collected

1 Trash Talk Lunch workshop hosted for service directors

2018 Residential Recycling Report

Key

This data reflects materials collected through each community's residential waste collection, recycling and yard waste management programs. It excludes materials from commercial buildings, retail stores, restaurants and apartment complexes that are not served by the community's waste collection program.

2018 Tons Landfilled Solid Waste =

Consists of non-recycled trash that is taken to a landfill for disposal.

2018 Tons Recycled Recyclables =

Consists of cans, cartons, glass, paper and boxes, plastic bottles and jugs, scrap metal, appliances, computers, household hazardous waste and scrap tires that are collected for recycling.

2018 Tons Recycled Organics =

Consists of yard waste, leaves, grass, brush and wood collected for mulching and/or composting.

2018 Total Recycling Rate =

The percentage of residential waste diverted from landfills through the community's reuse, recycling and composting programs. The recycling rate is calculated by dividing the total tons recycled (organics + recyclables) by the total tons of waste generated (tons landfilled + tons recycled).

2017 Total Recycling Rate

Provided for comparison purposes.

Materials Recycled ÷ Solid Waste Generated (tons recycled + tons disposed) = % Materials Recycled

Community	2018 Tons Landfilled Solid Waste	2018 Tons Recycled Recyclables	2018 Tons Recycled Organics	2018 Total Recycling Rate	2017 Total Recycling Rate
Bay Village	4,710.99	1,824.57	7,676.81	66.85%	62.32%
Beachwood	3,410.25	818.79	2,335.29	48.05%	47.90%
Bedford	4,188.16	882.87	629.43	26.53%	31.61%
Bedford Heights	2,313.60	635.61	1,001.67	41.44%	38.04%
Bentleyville	325.55	103.49	238.60	51.24%	45.55%
Berea	4,361.68	1,650.39	2,454.36	48.48%	45.13%
Bratenahl	512.38	176.52	488.22	56.47%	64.64%
Brecksville	5,351.57	1,226.24	3,212.29	45.34%	47.95%
Broadview Heights	7,470.90	1,581.59	1,244.66	27.45%	26.47%
Brook Park	8,928.15	1,364.95	424.53	16.70%	16.31%
Brooklyn	3,253.17	855.72	2,231.76	48.69%	41.73%
Brooklyn Heights	661.60	246.24	183.63	39.38%	41.72%
Chagrin Falls Township	47.97	11.73	0.00	19.65%	27.93%
Chagrin Falls Village	1,481.33	643.78	337.05	39.84%	37.29%
Cleveland	182,248.61	13,516.98	1,229.12	7.49%	12.98%
Cleveland Heights	14,691.56	3,204.54	41,708.00	75.35%	72.00%
Cuyahoga Heights	346.93	48.08	21.34	16.67%	33.39%
East Cleveland	5,301.70	102.43	0.33	1.90%	1.10%
Euclid	16,347.99	3,062.21	4,927.07	32.83%	34.75%
Fairview Park	4,915.71	1,526.21	2,832.38	47.00%	53.01%
Garfield Heights	11,668.28	2,309.12	2,257.70	28.13%	28.16%
Gates Mills	936.90	221.94	9.03	19.78%	15.87%
Glenwillow	171.11	71.55	47.89	41.11%	34.22%
Highland Heights	3,981.95	1,157.70	1,766.31	42.34%	42.71%
Highland Hills	271.68	47.24	366.76	60.38%	60.17%
Hunting Valley	315.64	48.77	15.50	16.92%	21.16%
Independence	3,516.12	842.34	2,275.56	47.00%	53.47%
Lakewood	16,906.67	4,737.78	10,912.27	48.07%	49.46%
Linndale	45.73	11.45	0.00	20.02%	19.78%
Lyndhurst	5,610.58	1,336.00	2,924.42	43.16%	38.79%
Maple Heights	9,079.69	897.81	1.00	9.01%	12.53%
Mayfield Heights	5,084.51	894.06	2,235.37	38.10%	37.50%
Mayfield Village	1,449.29	407.48	911.37	47.64%	63.91%
Middleburg Heights	5,209.25	903.20	3,080.87	43.34%	46.77%
Moreland Hills	1,201.62	545.08	397.42	43.96%	60.43%
Newburgh Heights	933.04	216.39	0.00	18.83%	16.35%
North Olmsted	7,868.50	2,939.21	6,094.61	53.45%	50.96%
North Randall	250.78	0.74	1.00	0.69%	0.37%
North Royalton	11,194.94	3,036.76	2.00	21.35%	19.49%
Oakwood	1,219.54	116.39	700.40	40.11%	43.06%
Olmsted Falls City	2,533.66	689.11	1,458.07	45.87%	41.23%
Olmsted Township	3,106.55	930.88	1,391.17	42.77%	45.22%
Orange	1,233.53	460.22	658.97	47.57%	50.15%
Parma	22,470.13	6,975.39	6,070.04	36.73%	37.60%
Parma Heights	4,877.62	1,293.85	4,029.63	52.19%	52.37%
Pepper Pike	2,718.69	890.93	746.08	37.58%	33.98%
Richmond Heights	3,966.34	240.55	1,442.27	29.79%	20.09%
Rocky River	7,612.00	1,533.05	4,309.80	43.43%	40.16%
Seven Hills	5,551.99	1,279.09	1,736.00	35.19%	26.51%
Shaker Heights	8,362.71	1,561.31	8,706.02	55.11%	58.75%
Solon	7,441.00	2,127.04	5,026.53	49.02%	49.47%
South Euclid	8,234.53	2,004.66	7,825.00	54.42%	54.90%
Strongsville	21,242.53	2,750.28	7,347.39	32.22%	32.71%
University Heights	4,542.25	334.06	1,236.33	25.69%	35.03%
Valley View	909.11	148.08	412.55	38.14%	38.89%
Walton Hills	942.86	249.56	578.75	46.77%	61.56%
Warrensville Heights	2,921.99	608.73	0.00	17.24%	15.71%
Westlake	13,266.17	2,523.32	7,022.72	41.85%	39.60%
Woodmere	166.62	22.86	272.70	63.95%	66.71%

Community Totals **479,885.90** **80,846.88** **167,446.04** **34.10%** **35.71%**



Cuyahoga County
SOLID WASTE DISTRICT
CuyahogaRecycles.org

4750 East 131 Street, Garfield Heights, OH 44105
(216) 443-3749 www.cuyahogarecycles.org

